

MORRICE AREA SCHOOLS CORONAVIRUS STUDENT SCREENING

STUDENT SCREENING

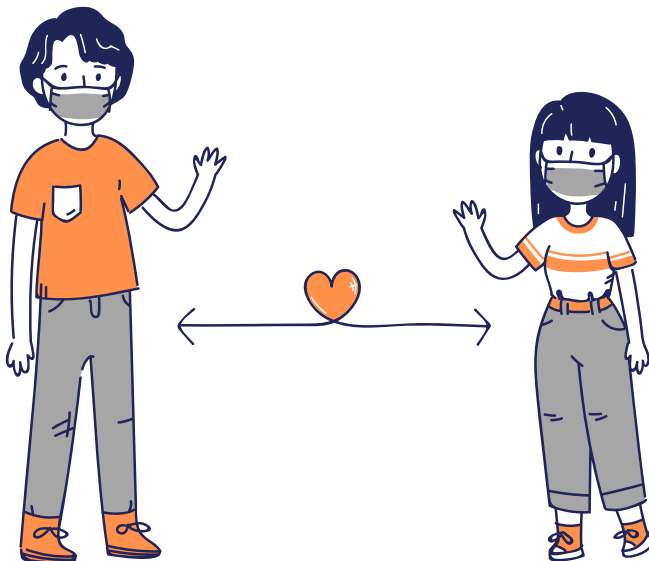
PRIOR TO REPORTING TO SCHOOL, all students of Morrice Area Schools must complete the coronavirus student screening form each day.

This screening tool is based on guidance from the Shiawassee County Health Department, and can be accessed by using a QR code or the following link to submit the form electronically:

morrice.k12.mi.us/studentscreening



- To use the QR code to access the student screening form:
 - On your compatible smart phone or tablet, open the built-in camera app.
 - Point the camera at the QR code.
 - Tap the banner that appears on your phone or tablet.



If you respond "Yes" to any questions on the screening form, please reach out to your building secretary or principal for further instructions prior to reporting to school.